

GPIO Allocation

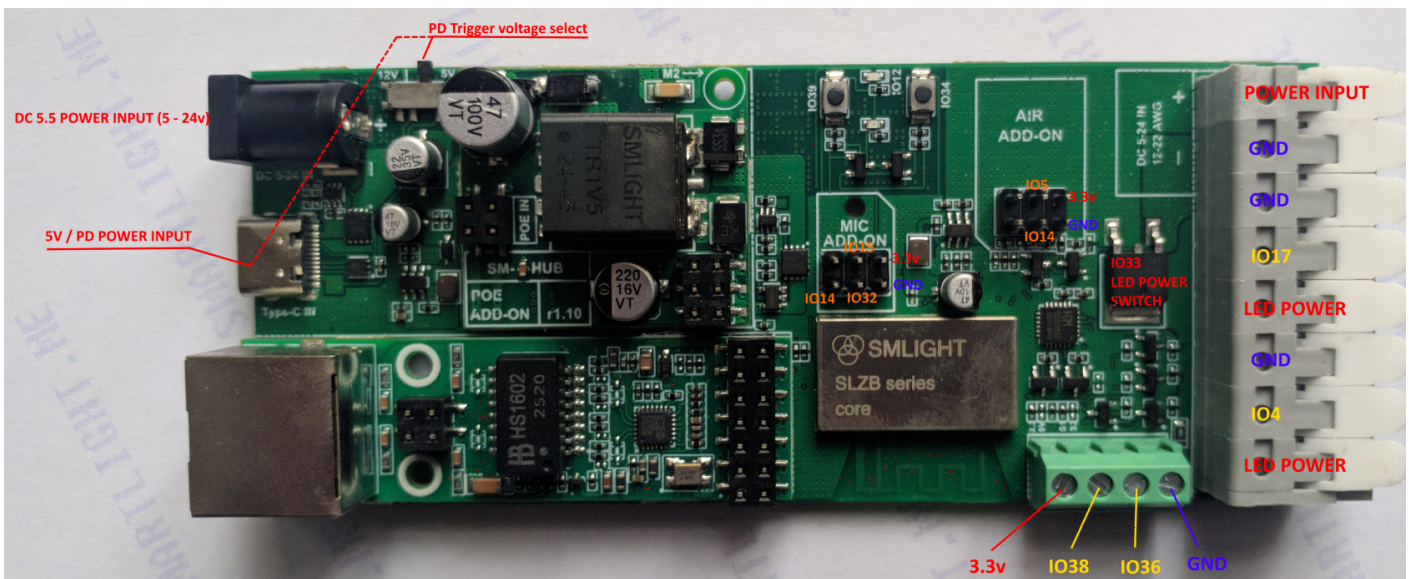
The table below lists all ESP32 GPIOs used by the SLWF-09, their assigned functions, and the type of interface or peripheral they control.

Pins marked with “*” are only used when the corresponding **add-on module** (Ethernet or Microphone) is installed.

The PoE add-on does not consume any GPIO pins.

Type	Function	GPIO
Boot/Prog	Not exposed	GPIO0
LED	On board LED	GPIO2
LED	LED data output 1 (DATA)	GPIO4
LED	LED data output 2 (for clocked LEDs)	GPIO17
I ² C	I ² C SCL (expansion) (10k pull up)	GPIO5
I ² C / Mic	I ² C SDA / Mic SCK* (10k pull up)	GPIO14
Mic	Mic WS*	GPIO15
Mic	Mic SD*	GPIO32
Ethernet	PHY RXER*	GPIO13
Ethernet	PHY Clock Enable / OSCEN*	GPIO16
Ethernet	MDIO*	GPIO18
Ethernet	TXD0*	GPIO19
Ethernet	TXEN*	GPIO21
Ethernet	TXD1*	GPIO22
Ethernet	MDC*	GPIO23
Ethernet	RXD0*	GPIO25

Type	Function	GPIO
Ethernet	RXD1*	GPIO26
Ethernet	CRS_DV*	GPIO27
Relay	LED power line control	GPIO33
Button	Button 1	GPIO34
DIY1	DIY input/output	GPIO36
Ethernet	Ethernet detect*	GPIO37
DIY2	DIY input/output	GPIO38
Button	Button 2	GPIO39
Reserved	Not connected (NC)	GPIO35



Revision #5

Created 14 August 2025 19:05:56 by Support3

Updated 1 October 2025 14:28:55 by Taras