

Device update

Update using the web tool

SLZB-07/MGx:

- Go to <https://smlight.tech/flasher/>
- Press **Update SLZB-07 Firmware** button
- Select SLZB-07x/MGx dongle serial port
- Wait for connection
- Select firmware (Coordinator/Router/Thread)
- Flash firmware

If you get an error:

- Unplug your coordinator
- Open enclosure
- Connect pad **FLSH** with the **GND** or any metal part of the antenna (you can use tweezers or scissors)
- Plug the coordinator to your PC (**keep FLSH connected to the GND**)
- Run flashing

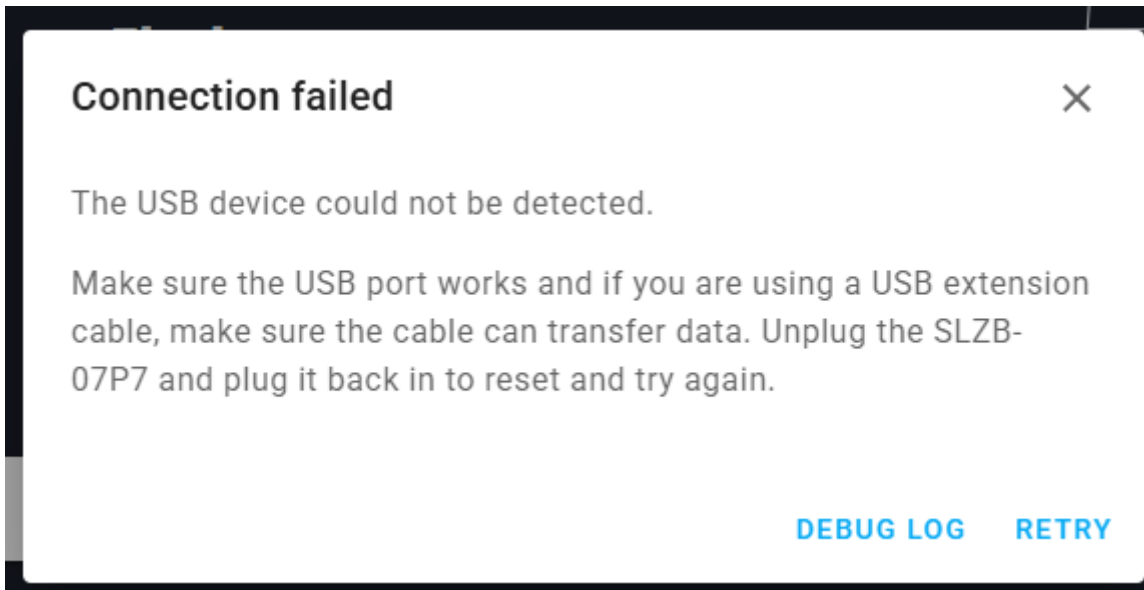
TIP: You can insert a screwdriver near the antenna to make it easier to disassemble the case.



SLZB-07pX:

- Go to <https://smlight.tech/flasher/>
- Press **Update SLZB-07pX Firmware** button
- Select SLZB-07pX dongle serial port
- Wait for connection
- Select firmware (Coordinator/Router/Thread)
- Flash firmware

If you get error:



- Refresh page
- Click on **Update SLZB-07pX Firmware** button again

Update using third-party tools

Flashing via Home Assistant addons

SLZB-07/MGx; https://github.com/home-assistant/addons/tree/master/silabs_flasher

Example config:

Silicon Labs Flasher



Options

Device

/dev/serial/by-id/usb-SMLIGHT_SMLIGHT_SLZB-07_220bf6ecf2dfed11a6825309f9a91825-if00-port0

The serial port where the Silicon Labs radio is connected to.

Bootloader Baudrate

57600

115200

230400

460800

921600

The serial port baudrate used to communicate with the Silicon Labs radio in bootloader mode.

Hardware flow control

Enable hardware flow control for serial port.



Firmware URL

`https://smlight.tech/flasher/firmware/bin/slzb-07/ncp-uart-hw-v7.4.1.0-slzb-07-115200.gbl`

Flash Custom firmware downloaded from URL.

Verbose mode

Start universal-silabs-flasher in verbose mode.



Save

SLZB-07Px: https://github.com/tube0013/tubeszb_addons/tree/main/tzb-cc2652-flasher/

Example configuration:

TubesZB TI CC2652 FW Flasher

Options

device

/dev/serial/by-id/usb-SMLIGHT_SMLIGHT_SLZB-07_220bf6ecf2dfed11a6825309f9a91825-if00-port0

network_device
null

trigger_esphome_bsl

device_type

sonoff

cc2652p2_fw

cc2652p7_fw

firmware_url
<https://smlight.tech/flasher/firmware/bin/slzb-07p7/download.php?file=znp-SLZB-07P7-EXT-20250325.hex>

Show unused optional configuration options

Save

Community firmware

SLZB-07/MGx

- https://github.com/darkxst/silabs-firmware-builder/tree/main/firmware_builds
- <https://github.com/Nerivec/silabs-firmware-builder/releases>

SLZB-07P7

- <https://github.com/Koenkk/Z-Stack-firmware/releases>

Please use **CC1352P7_coordinator_*** firmware for SLZB-07P7!
Incorrect firmware can brick your device!

SLZB-07P10

Sorry, there is no community firmware at this time.

Revision #4

Created 29 September 2025 13:10:48 by Taras

Updated 2 October 2025 09:24:42 by Taras